



Therapeutic Band

For

Veno-Occlusive

Dysfunction

(Venous Leak)



Male

Erection Enhancer



Erectile Dysfunction

Guide

Love, Play & Enjoy

The Loverband® Device

The Loverband® device is a new proven effective therapeutic band and patented method for the treatment of **Veno-Occlusive Dysfunction (Venous Leak)**. Safely enhances closure of the penis dorsal veins and prevents volume and pressure loss during erection, providing **fuller, harder and longer sustained erections**.

Poor venous occlusion is the leading cause of Erectile Dysfunction (ED) in males with satisfactory blood flow.

"Recent data suggest that approximately 80 percent of men with Vasculogenic impotence have evidence of failure to store blood (Venous Leakage) within the corpora cavernosa."

UCLA Medical Center, Torrance, CA, USA.

The Loverband® device is used externally and avoids the risk of surgery, medication side effects and health consequences. Results are immediate.

It is mostly effective on males who are able to obtain an erection without difficulty but whose erection is not firm or decreases rapidly.

The Loverband® Device - Results

- Increased Volume and Girth
- Fuller Penis Glans (Penis Head)
- Increased Pressure and Rigidity
- Holds Rigid Erection Longer
- Improves Blood Flow and Oxygenation to Penile Tissue
- Reduces Hypersensitivity and Delays Premature Ejaculation.
- Prevents Venous Leak Without Medication
- Improves Occlusion in ED Cases With Medication

The Loverband® Device - Quality

- FDA Compliant
- Therapeutic
- Hypoallergenic
- Latex Free
- Durable
- Medical Grade Rubber
- Environmentally Friendly (Green Product)
- Soft and Super-Stretchable

The Loverband® Device - Aid

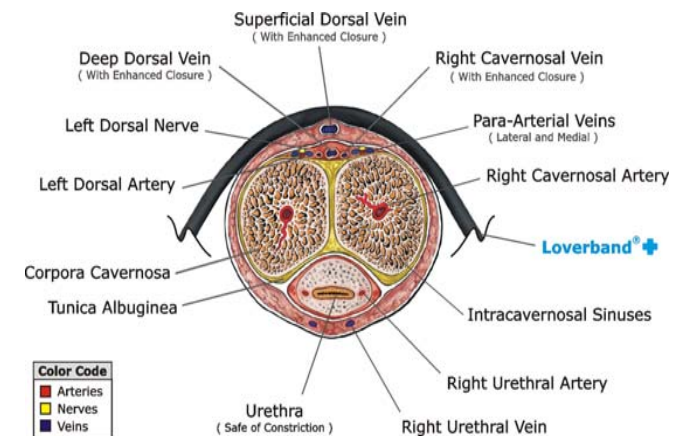
During arousal, penile arteries dilate (open-up) following smooth muscle relaxation of the cavernosal sinuses, then the penis inner erectile tissue fills with blood and expands as pressure raises inside the corpora cavernosa. In order to sustain penile pressure and rigidity, draining veins are compressed during penile expansion preventing blood from rapidly leaving the penis.

The thickness-elasticity relationship (stiffness) between the Deep "Buck's" fascia and Tunica Albuginea play an important physiological role with penile veno-occlusions. Poor venous occlusion is associated with a reduced amount of elastic fibers or structural alterations to the fibroelastic properties within a stiffer Tunica Albuginea and corpora cavernosa.

A stiffer Tunica Albuginea will cause less contact pressure from the Deep Fascia on the out-of-tunica draining veins and venous leakage will occur.

The Loverband® device recovers up to 60% deficiency of the out-of-tunica closure mechanism by the controlled application of pressure at the penis dorsal base without adversely affecting blood circulation of the penis.

Cross-section of the penis with The Loverband® Device - Illustration



The cavernosal arteries are the major arterial supply to the corpora cavernosa and are subjected to changing intracorporeal pressure.

The erection-related veins are arranged on the dorsal portion of the Tunica Albuginea and receive blood return from emissary and lateral circumflex veins along the penis.

Premature Ejaculation

Primary Premature Ejaculation (**PPE**) is associated with hypersensitivity of the penis glans (penis head) arising from the dorsal nerves which can exist in a few to numerous branches.

The Loverband® device pressure partially and temporarily desensitizes the penis dorsal nerves which innervate the penis glans. Reduces hypersensitivity of the penis glans and delays ejaculatory latency time without affecting the sensation of ejaculation.

Erectile Dysfunction

Erectile dysfunction, also known as **ED** is the inability to achieve or sustain an adequate erection for sexual activity.

The process of achieving and sustaining an erection depends on the proper functioning of the pelvic muscles, nervous system, penile arteries, penile tissue and **occlusion of veins in the penis**. If any of these areas of the body are not functioning or are not completely functional, this can cause erectile dysfunction.

Erectile Dysfunction can be psychological, **physical (organic)**, caused by surgery or injuries.

ED Categories:

Psychogenic
Neurogenic
Hormonal
Vasculogenic (arterial and/or venous)
Medication-Induced

Incomplete occlusion of the penis veins during erection or **Veno-Occlusive Dysfunction (VOD)**, the second leading cause of ED, explain the majority of Vasculogenic ED cases in males with normal arterial anatomy.

Arterial blood inflow is associated with the integrity of the penile arteries, testosterone levels and the release of **Nitric Oxide (NO)** to relax blood vessels and penile smooth muscle tissue allowing blood to flow in. Nitric Oxide is released upon arousal by nerve cells at the penis nerve endings near blood vessels and is sustained through continuous release by the endothelial arterial wall cells. The pressure of blood flowing against the arterial walls activates the release of more Nitric Oxide maintaining this process during erection.

With Venous Leakage, incomplete veno-occlusions lead to low erection pressures and inadequate release of sustaining Nitric Oxide.

The Loverband® device improves the release of Nitric Oxide at the arterial wall cells from the flow of blood under increased pressure.

Prescription drugs are often the first and only course of treatment tried for all variations of erectile dysfunction. Medication enhances the effects of Nitric Oxide by inhibiting the enzymes which block the release of Nitric Oxide but does not treat occlusion of venous outflow entirely. Cavernal pressures are improved but may not be ideal or at full capacity and glanular insufficiency (glans or penis head is not completely full) may still persist.

In addition to drug treatment, other approaches for the treat of ED include hormone therapy and surgery. Drug treatment and surgery are expensive and involve a certain degree of risk and health consequences.

Veno-Occlusive Dysfunction (VOD), Venous Leak or Erection Leak is present in most ED cases and is detrimental to penis health. **VOD** causes a chronic reduction in blood flow and deficient cavernosal pressures. Limited blood flow and oxygenation to the penis tissue cells can lead to fibrous scar tissue, a condition called corporal fibrosis which is untreatable at the present time.

Consult with your physician before using The Loverband® device in combination with erection medications or if you have symptoms of erectile dysfunction or any existing medical condition of the penis.



Safe & Effective

Sexual Intimacy Enhanced!

Love, Play & Enjoy

How to Use The Loverband® Device

1. Wear around the waist below the buttocks (Fig. 1)
2. Pull the back of the band, between the legs, and place over the penis base when erect (Fig. 2)
3. Stretch to adjust pressure and comfort (Fig. 3)

U.S. Patent No. 8,360,957



Fig.1

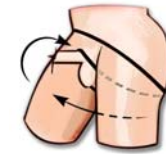


Fig. 2

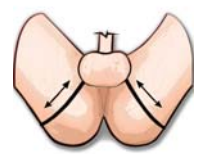


Fig. 3

The Loverband® Device - How to Use Tips

Moisten with personal lubricant as needed to avoid discomfort with pubic hair.

Adjust avoiding excessive pressure and penile rigidity.

Stimulate the penis manually as needed to reach and hold optimal rigidity.

Release by pulling it way from the penis or by stretching it loose.

Use during intercourse or as self-therapy for erection improvement.

Clean by washing with soap and water.

For best and consistent results, replace The Loverband® device when the tension in the band has decreased after several months of use.

For maximum pleasure and optimal results use ASTROGLIDE® Personal Gel or Personal Liquid lubricant.

Warming Personal Jelly and Warming Personal Liquid Lubricant can be effective in relaxing penile muscle tissue improving erection blood flow and performance.

The Loverband® device pressure mark on the penis skin will clear within 30 minutes after each use.

Compare The Loverband® Device With Penis Rings

Loverband® Device

- One size fits all / Easily adjustable / Comfortable
- Effectively applies sufficient pressure without constricting the urethra, penile arteries and the genitalia
- Blood circulation of the penis is not adversely affected
- Improves blood oxygenation to the penis
- Safely applies extra pressure as needed
- Ejaculation is not trapped
- Extended use time
- Does not slide during use
- Does not interfere with penetration during intercourse
- Therapeutic with immediate and long term erection improvement
- Conforms with **FDA** recommendations as a least constrictive device

Penis Rings

- Difficult to choose for size and pressure / Uncomfortable or even painful
- Do not effectively apply sufficient pressure constricting the urethra, penile arteries and the genitalia
- Blood circulation of the penis is adversely affected with limited applied pressure
- Stop blood flow and deprive oxygenation to the penis
- Ejaculation may be trapped by the constricting ring
- Limited use time
- Slide during use
- Interfere with penetration during intercourse
- Not therapeutic
- **FDA** recommends a manual safety release mechanism

Circular constriction devices (penis rings) squeeze the penis and impair the ability of blood vessels to open by constricting the arteries and blocking the continuous blood supply under normal blood flow.

Signs of problems with this condition may include: Redness, irritation, bruising, pain in the penis, the penile skin may be dusky, or the penis feels cold to you or your partner. When the blood oxygen level in the corpora cavernosa is reduced due to circular constriction, the portion of the penis near the ring is not rigid and may cause the penis to pivot on its base and feel numbness.

The Loverband® Device - Features

- **Enlarges** Provides fuller enlarged rigid erections
- **Reliable** Provides constant pressure without sliding
- **Comfortable** Does not constrict the genitalia
- **Adjustable** Easy to stretch for adjustment
- **Effective** With Vacuum Erectile Therapy devices

The Loverband® device conforms with FDA recommendations as a least constrictive device as per the "*Guidance for Industry and FDA Staff - Class II Special Controls Guidance Document: External Penile Rigidity Devices*"

The Loverband® device is made in one size only and stretches to fit all males. It is available in colors Tan, Black and Red.

The Loverband® Device - Frequently Asked Questions

Who can use The Loverband® device?

Any adult male can use it and benefit from it.

Is The Loverband® device safe?

It is safe if the applied pressure and penile rigidity are not excessive.

Is it safe to ejaculate with The Loverband® device?

Ejaculation is safe if the applied pressure and penile rigidity are not excessive. It does not constrict the urethra and allows for unobstructed ejaculation.

How does it improve erection size over time?

Every time The Loverband® device is used, erections are fuller and the penis tissue stretches to the new fullness.

Do I need to have an erection to use

The Loverband® device? Yes. The Loverband® device is effective after an erection has been reached (naturally or induced)

Does it pull on pubic hair?

It may happen and depends on the individual person. Moisten The Loverband® device with personal lube as needed to avoid discomfort with pubic hair.

Distributed by: Bliss Products, LLC.
5775 Sunset Drive
South Miami, FL 33143

(888) 954-7774 USA Toll Free
(888) 956-4447 Fax

www.theloverband.com / contactus@theloverband.com



Therapeutic Band

For

Veno-Occlusive

Dysfunction

(Venous Leak)



Male

Erection Enhancer



Erectile Dysfunction

Guide

Love, Play & Enjoy