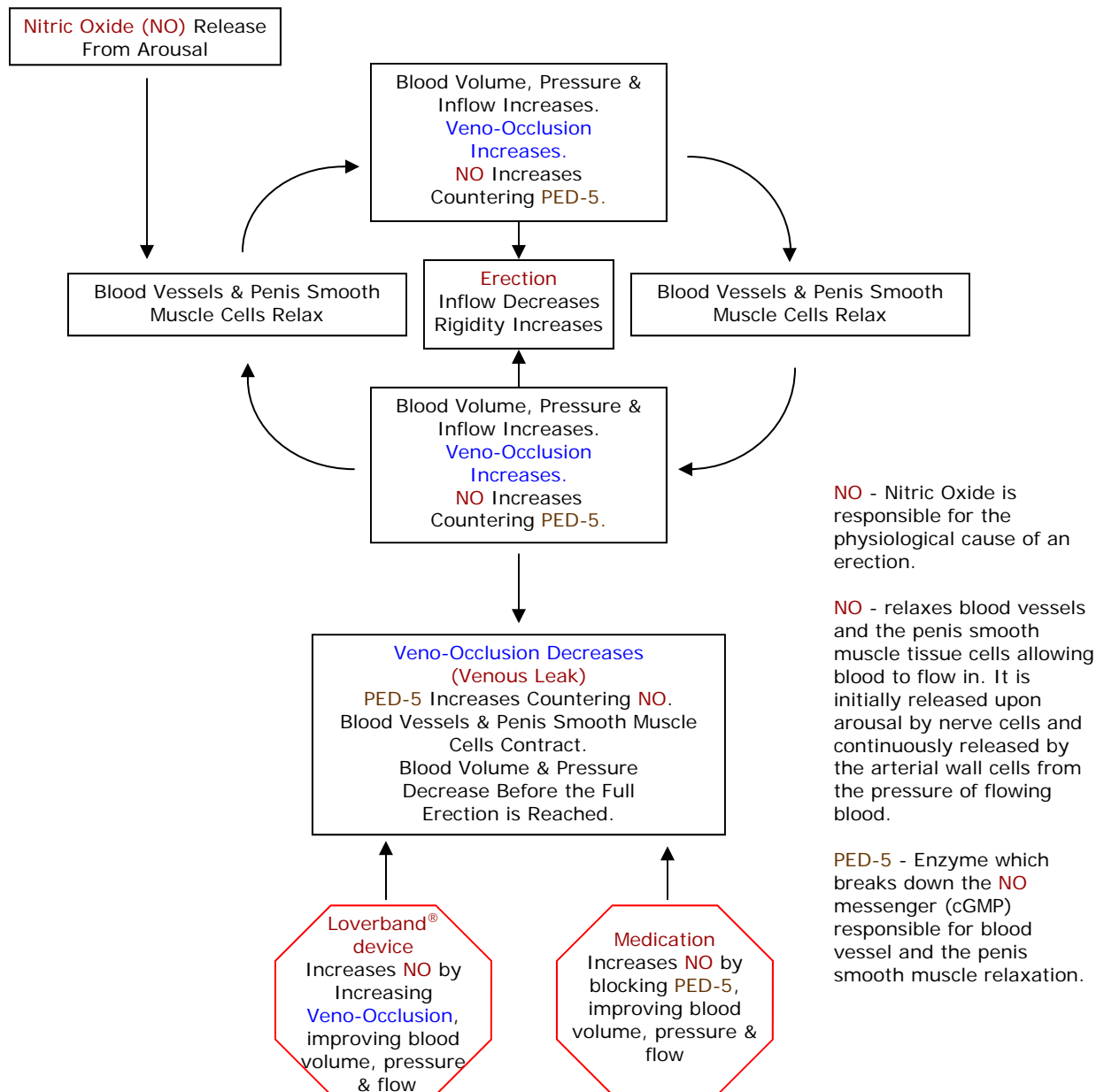


The Loverband® Device - Erection Balance Flow-Chart

The chemical interaction between Nitric Oxide (NO) and the enzyme PED-5 play an important role in achieving and sustaining a penile erection. PED-5 enzymes break down the NO messenger (cGMP) responsible for blood vessel and penis smooth muscle relaxation. During the erection cycle, pressure equilibrium is reached by the occlusion of veins throughout the penis and the release of sufficient NO by the arterial wall cells from the pressure of flowing blood. In Venous Leakage cases, weak veno-occlusions lead to low erection pressures and inadequate release of NO. The following flow chart shows the interaction between NO, PED-5 and the veno-occlusion effect to sustain the erection cycle by increasing the pressure of flowing blood, causing the release of NO.



The Loverband® device is an effective solution used with or without medication for sustaining the erection cycle equilibrium after the erection has first reached enough pressure (naturally or induced) to be sustained by the action of the band in combination with a higher supply of Nitric Oxide.